

Introduction to Bricx Command Center

Aim: How can we navigate around the Bricx Command Center?

Goals

- Become exposed to a text based programming language
- Develop a feel for programming and navigating around Bricx Command Center
- Become familiar with the various menus of Bricx
- Use the Bricx Command Center software to observe the capabilities of the program

NQC

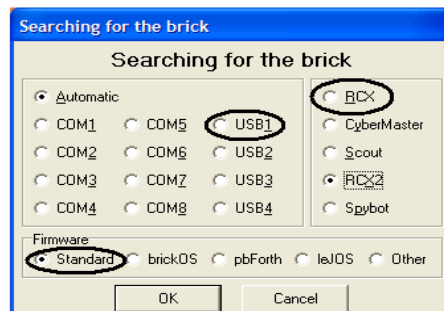
- Text Based Language
 - No More Icons
 - Requires a compiler
- Advantages
 - More powerful and concise
 - Software is free and accessible online
- Disadvantages
 - Less concrete
 - May be difficult to detect and correct errors

What's a compiler?

- Compiler – software that converts written programming language (NQC) into machine language
- Program that decodes instructions written in a higher order language and produces an assembly language program

Getting Started

- Before Bricx will open up, it must first detect the RCX brick

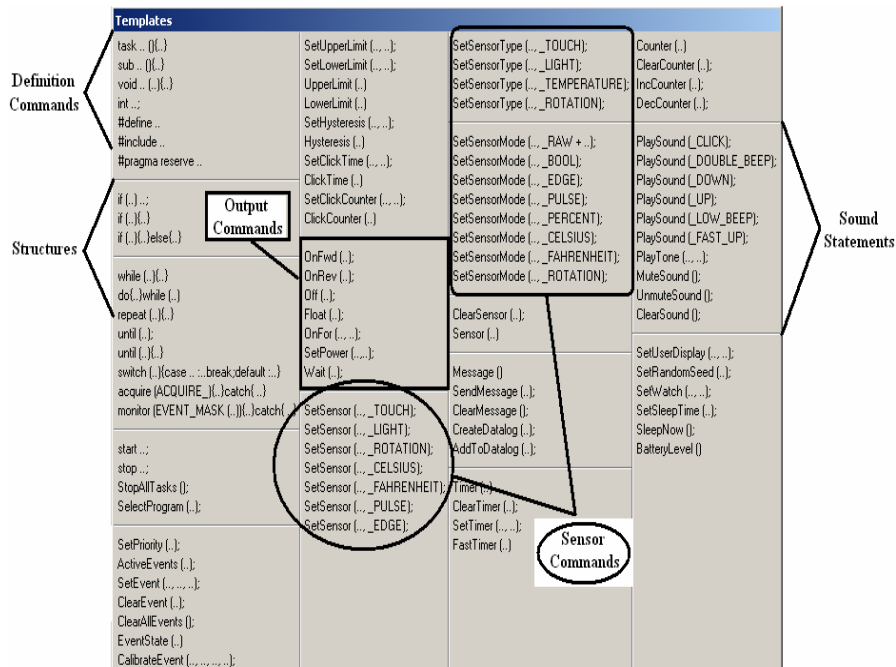


Once the RCX is detected...

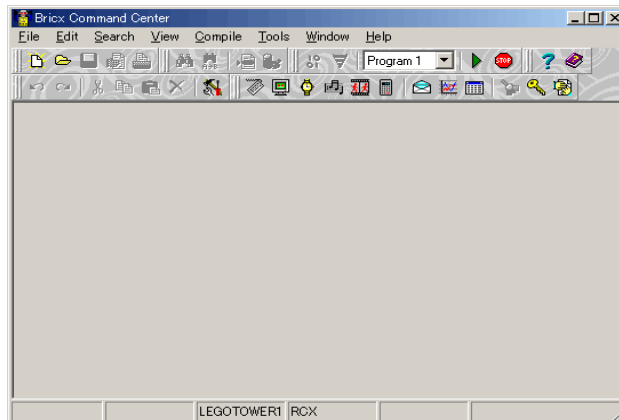
- Two main windows appear
 - Templates
 - Brick Command Center – Main Window

Templates Window

- Contains the programming statements
- Lazy people can click instead of typing commands!
- Useful if you can't remember certain commands

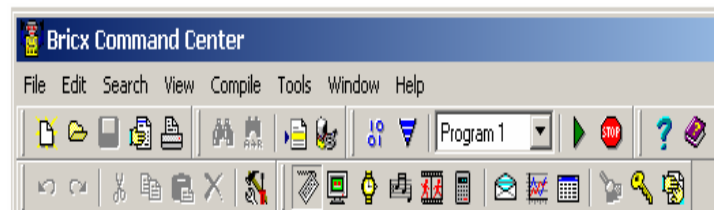


Main Window



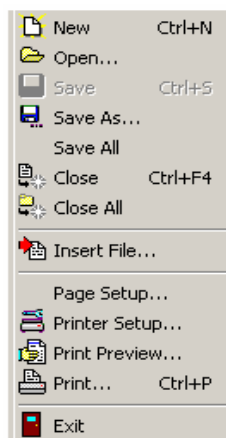
Menus

- File
- Edit
- Search
- View
- Compile
- Tools
- Window
- Help



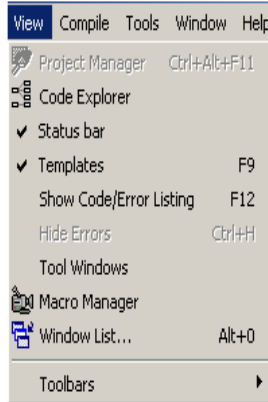
File Menu

- Typical file menu
- Click on New to start writing a program
- Open/Save/Close/Print
- Insert File
 - Allows us to insert a text file that contains code



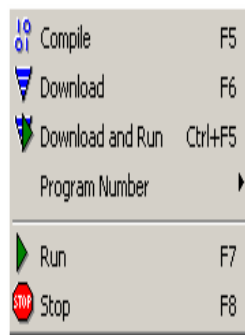
View Menu

- Allow us to select which Toolbars we want to be visible
- Shows Code/Error Listing
 - Provides list of errors in program
 - Specifies the line the error is on



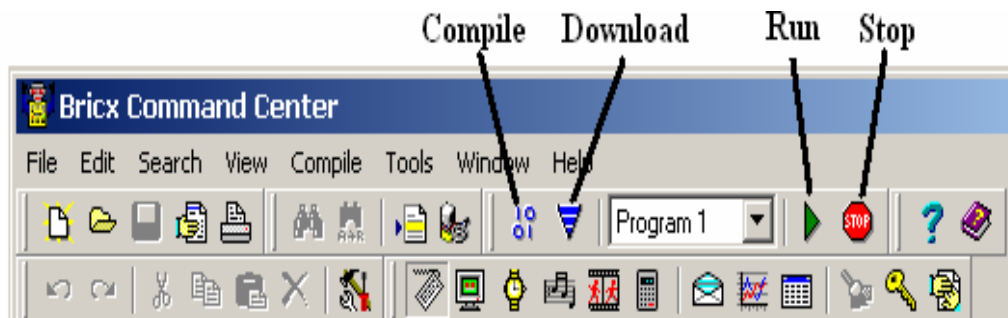
Compile Menu

- Compile – compiles program
 - Lists errors (if any)
- Download – compiles and sends program to RCX
- Download and Run – compiles, sends, and begins to run program
- Stop – stops the RCX from running the program



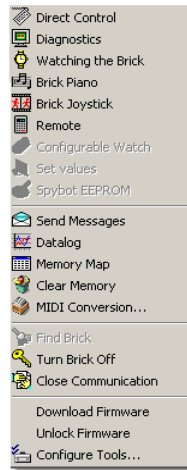
Compile Toolbar

- The features on the Compile menu are also available on the Compile Toolbar on the Main Window



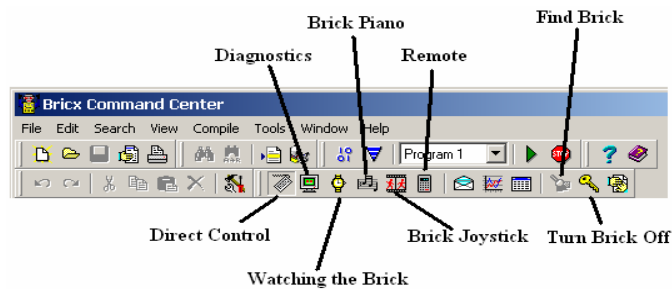
Tools Menu

- Contains several interesting features for controlling the RCX



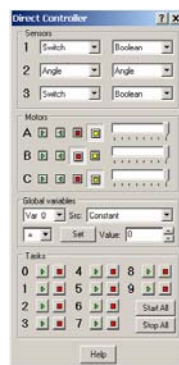
Tools Toolbar

- The features on the Tools Menu are also available on the Tools Toolbar on the Main Window



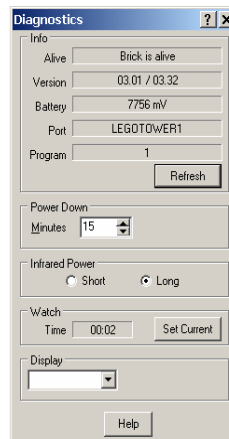
Direct Controller

- Allows you to directly control the robot through the IR tower



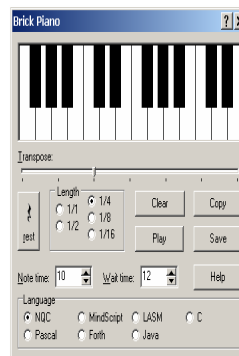
Diagnostics

- Let's you know that the brick is alive, along with other useful info



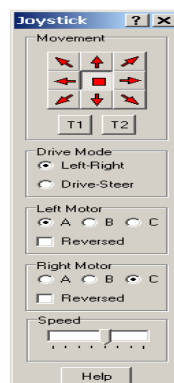
Brick Piano

- Allows you to compose symphonies to be played by the RCX
- You can play through IR communication



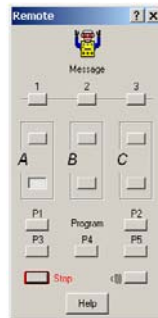
Brick Joystick

- Control your robot's motions through the IR tower



Remote

- Similar idea to the Joystick



In-Class Activity

- Same groups you built Tankbot with
- Navigating Around Brick Command Center Sheet